



VIBRANTZ
TECHNOLOGIES™

VIBRANTZ PIGMENTS

FOR INKS
COLOR CARD

VIBRANTZ PIGMENTS FOR INKS

About Vibrantz Technologies

Vibrantz Technologies is a leading global supplier of technology-based performance materials, including glass-based coatings, pigments and colors, and polishing materials. Vibrantz products are sold into the building and construction, automotive, appliances, electronics, household furnishings, and industrial products markets. The Company is headquartered in Houston, Texas, USA.

Our Values and behaviors:

- **CUSTOMER FOCUS**

Our customers are why we exist. We build relationships with internal and external customers that are built on trust, a desire to understand their needs and challenges, and a genuine interest in making them more successful.

- **ACCOUNTABILITY FOR PERFORMANCE**

As individuals and teams, we work to achieve the highest performance standards. We prioritize safety and environmental stewardship; providing high-value solutions for our customers; and creating value for Vibrantz's shareholders.

- **INNOVATIVE THINKING**

We encourage our associates to seek out new ideas for technologies and business processes, and to always look for ways to improve and to better serve our customers.

- **TEAMWORK AND COLLABORATION**

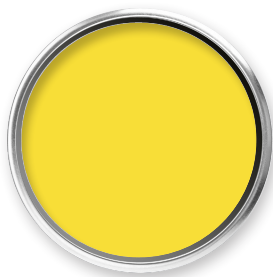
We are committed to a work environment that promotes trust, mutual respect, teamwork and collaboration, and that focuses on consistently delivering value to our customers and shareholders.

PY3

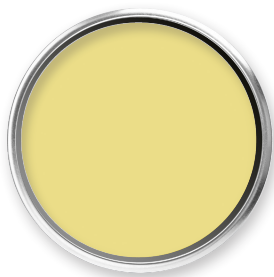
MONOAZO YELLOW

Spec. gravity (g/cm ³)	1,57
Spec. surface (m ² /g)	20,10
pH	7,30
Oil absorption (g/100g)	62
Light fastness (oil ink 20%)	7
Light fastness (liquid ink 8%)	5
Heat fastness (grey scale)	3-4
Sterilization (grey scale)	3-4

0314C • Full Shade



0314C • Reduced Shade

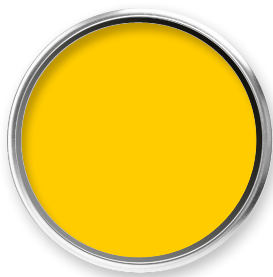


PY13

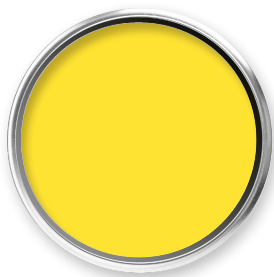
DIARYLIDE YELLOW

Spec. gravity (g/cm ³)	1,39
Spec. surface (m ² /g)	55,50
pH	5,60
Oil absorption (g/100g)	49,50
Light fastness (oil ink 20%)	4-5
Light fastness (liquid ink 8%)	4
Heat fastness (grey scale)	5
Sterilization (grey scale)	5
Additional products	Lysopure 1318C • Lysopure 1319C

1314C • Full Shade



1314C • Reduced Shade

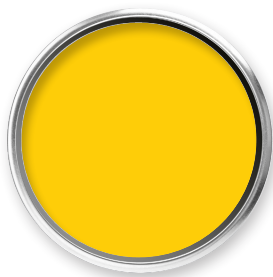


PY14

DIARYLIDE YELLOW

Spec. gravity (g/cm ³)	1,54
Spec. surface (m ² /g)	14
pH	6,80
Oil absorption (g/100g)	49
Light fastness (oil ink 20%)	3
Light fastness (liquid ink 8%)	2
Heat fastness (grey scale)	3-4
Sterilization (grey scale)	4

1414C • Full Shade



1414C • Reduced Shade

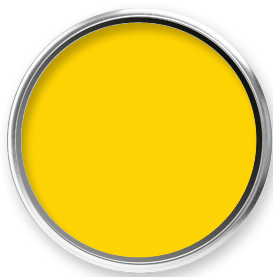


PY17

DIARYLIDE YELLOW

Spec. gravity (g/cm ³)	1,39
Spec. surface (m ² /g)	36,70
pH	7,30
Oil absorption (g/100g)	42
Light fastness (oil ink 20%)	5-6
Light fastness (liquid ink 8%)	5-6
Heat fastness (grey scale)	5
Sterilization (grey scale)	5

1715C • Full Shade



1715C • Reduced Shade

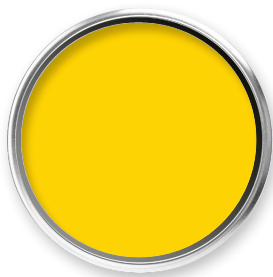


PY73

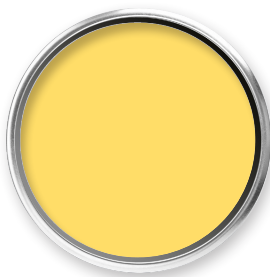
MONOAZO YELLOW

Spec. gravity (g/cm ³)	1,58
Spec. surface (m ² /g)	–
pH	4,60
Oil absorption (g/100g)	58
Light fastness (oil ink 20%)	7
Light fastness (liquid ink 8%)	6–7
Heat fastness (grey scale)	3
Sterilization (grey scale)	3

7312C • Full Shade



7312C • Reduced Shade

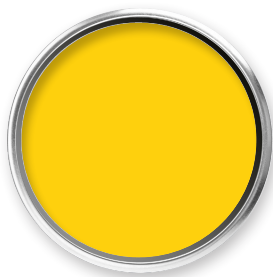


PY74

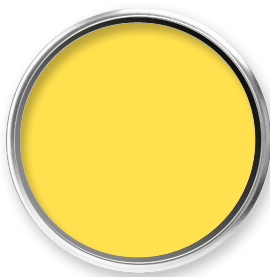
MONOAZO YELLOW

Spec. gravity (g/cm ³)	1,38
Spec. surface (m ² /g)	24,60
pH	7
Oil absorption (g/100g)	45,5
Light fastness (oil ink 20%)	6
Light fastness (liquid ink 8%)	5
Heat fastness (grey scale)	3
Sterilization (grey scale)	1-2
Additional products	7414C · 7415C · Lysopure 7418C

7412C · Full Shade



7412C · Reduced Shade

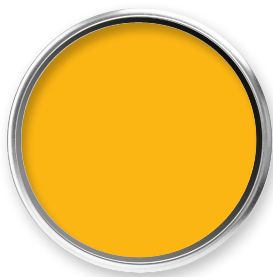


PY83

DIARYLIDE YELLOW

Spec. gravity (g/cm ³)	1,51
Spec. surface (m ² /g)	48,90
pH	4,60
Oil absorption (g/100g)	53
Light fastness (oil ink 20%)	6
Light fastness (liquid ink 8%)	5
Heat fastness (grey scale)	4-5
Sterilization (grey scale)	4-5
Additional products	8316C

8315C • Full Shade



8315C • Reduced Shade



PY83

DIARYLIDE YELLOW

Spec. gravity (g/cm ³)	1,43
Spec. surface (m ² /g)	90,60
pH	7
Oil absorption (g/100g)	44
Light fastness (oil ink 20%)	4
Light fastness (liquid ink 8%)	5
Heat fastness (grey scale)	5
Sterilization (grey scale)	4-5
Additional products	8318C · 8319C

8317C · Full Shade



8317C · Reduced Shade



PY110

ISOINDOLINONE YELLOW

Spec. gravity (g/cm ³)	1,90
Spec. surface (m ² /g)	29
pH	9,80
Oil absorption (g/100g)	39
Light fastness (oil ink 20%)	8
Light fastness (liquid ink 8%)	—
Heat fastness (grey scale)	5
Sterilization (grey scale)	4–5

1010C • Full Shade



1010C • Reduced Shade

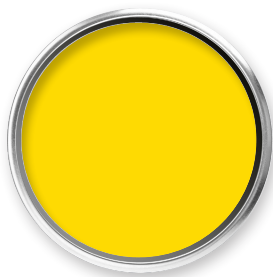


PY111

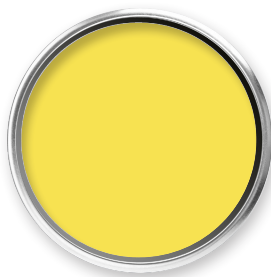
MONOAZO YELLOW

Spec. gravity (g/cm ³)	1,50
Spec. surface (m ² /g)	28,30
pH	7,20
Oil absorption (g/100g)	33
Light fastness (oil ink 20%)	4
Light fastness (liquid ink 8%)	6-7
Heat fastness (grey scale)	5
Sterilization (grey scale)	4
Additional products	Lysopure 1118C

1115C • Full Shade



1115C • Reduced Shade

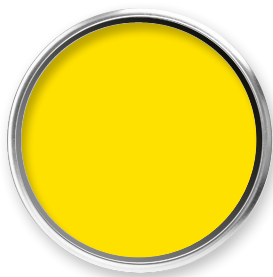


PY151

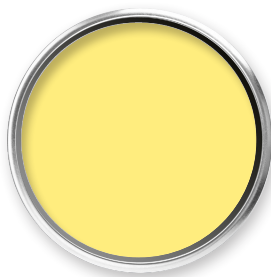
BENZIMIDAZOLONE YELLOW

Spec. gravity (g/cm ³)	1,45
Spec. surface (m ² /g)	15
pH	9,00
Oil absorption (g/100g)	40
Light fastness (oil ink 20%)	7
Light fastness (liquid ink 8%)	7
Heat fastness (grey scale)	5
Sterilization (grey scale)	3

5110C • Full Shade



5110C • Reduced Shade

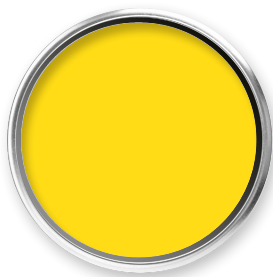


PY155

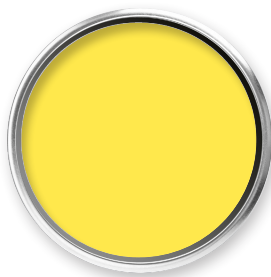
BISACETOACETARYLIDE YELLOW

Spec. gravity (g/cm ³)	1,41
Spec. surface (m ² /g)	–
pH	7
Oil absorption (g/100g)	43,50
Light fastness (oil ink 20%)	7
Light fastness (liquid ink 8%)	7
Heat fastness (grey scale)	5
Sterilization (grey scale)	5
Additional products	Lysopure 5518P

5515C • Full Shade



5515C • Reduced Shade



PY170

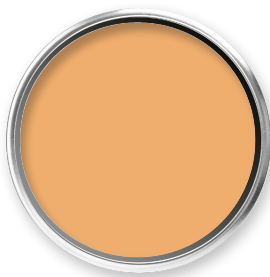
DIARYLIDE YELLOW

Spec. gravity (g/cm ³)	1,40
Spec. surface (m ² /g)	12,10
pH	9,40
Oil absorption (g/100g)	50
Light fastness (oil ink 20%)	7
Light fastness (liquid ink 8%)	7
Heat fastness (grey scale)	5
Sterilization (grey scale)	5

7010C • Full Shade



7010C • Reduced Shade

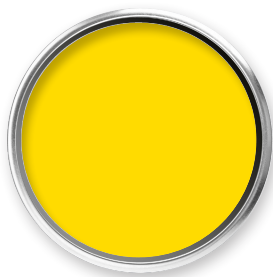


PY194

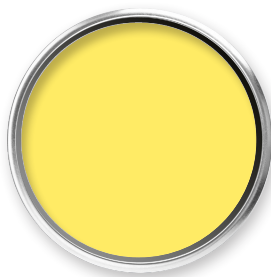
BENZIMIDAZOLONE YELLOW

Spec. gravity (g/cm ³)	1,50
Spec. surface (m ² /g)	19,8
pH	9,30
Oil absorption (g/100g)	68
Light fastness (oil ink 20%)	6
Light fastness (liquid ink 8%)	—
Heat fastness (grey scale)	5
Sterilization (grey scale)	3

9410C • Full Shade



9410C • Reduced Shade



PO13

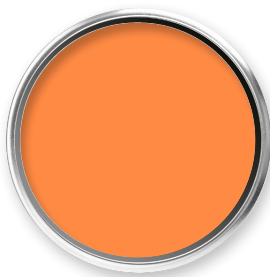
DISAZOPYRAZOLONE ORANGE

Spec. gravity (g/cm ³)	1,55
Spec. surface (m ² /g)	54
pH	6,40
Oil absorption (g/100g)	67
Light fastness (oil ink 20%)	3
Light fastness (liquid ink 8%)	4
Heat fastness (grey scale)	4-5
Sterilization (grey scale)	4-5

1323C • Full Shade



1323C • Reduced Shade

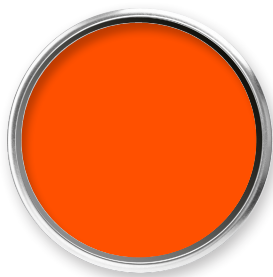


PO34

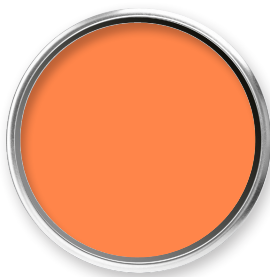
DISAZOPYRAZOLONE ORANGE

Spec. gravity (g/cm ³)	1,53
Spec. surface (m ² /g)	46
pH	7,10
Oil absorption (g/100g)	42
Light fastness (oil ink 20%)	4
Light fastness (liquid ink 8%)	5-6
Heat fastness (grey scale)	4
Sterilization (grey scale)	4
Additional products	3427C

3424C • Full Shade



3424C • Reduced Shade



PO34

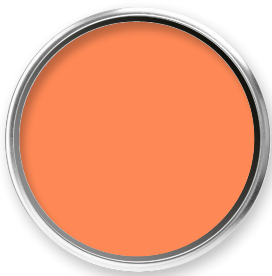
DISAZOPYRAZOLONE ORANGE

Spec. gravity (g/cm ³)	1,47
Spec. surface (m ² /g)	46,3
pH	7,20
Oil absorption (g/100g)	37,6
Light fastness (oil ink 20%)	4
Light fastness (liquid ink 8%)	5-6
Heat fastness (grey scale)	4
Sterilization (grey scale)	4
Additional products	3420C · Lysopure 3428C

3426C · Full Shade



3426C · Reduced Shade



PO36

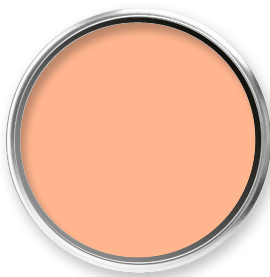
BENZIMIDAZOLONE ORANGE

Spec. gravity (g/cm ³)	1,66
Spec. surface (m ² /g)	16,10
pH	9,50
Oil absorption (g/100g)	45
Light fastness (oil ink 20%)	7-8
Light fastness (liquid ink 8%)	7-8
Heat fastness (grey scale)	5
Sterilization (grey scale)	5
Additional products	3621C

3620C • Full Shade



3620C • Reduced Shade



PO64

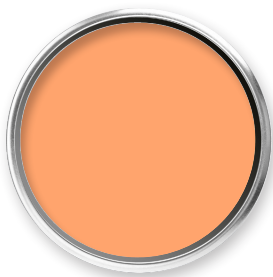
BENZIMIDAZOLONE ORANGE

Spec. gravity (g/cm ³)	1,13
Spec. surface (m ² /g)	23,60
pH	7,60
Oil absorption (g/100g)	45,10
Light fastness (oil ink 20%)	6
Light fastness (liquid ink 8%)	-
Heat fastness (grey scale)	5
Sterilization (grey scale)	4

6428C • Full Shade



6428C • Reduced Shade

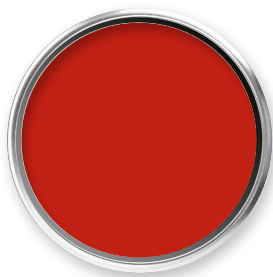


PR2

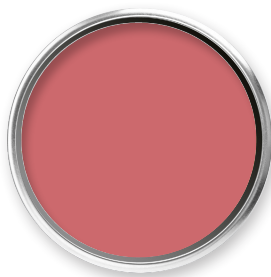
NAPHTHOL AS RED

Spec. gravity (g/cm ³)	1,67
Spec. surface (m ² /g)	–
pH	9,80
Oil absorption (g/100g)	45,20
Light fastness (oil ink 20%)	5
Light fastness (liquid ink 8%)	5
Heat fastness (grey scale)	3–4
Sterilization (grey scale)	3–4
Additional products	0236C

0233C • Full Shade



0233C • Reduced Shade

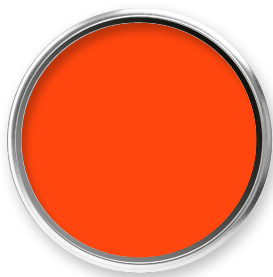


PR48:1

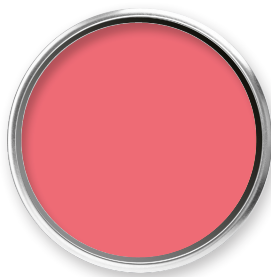
BONA, Ba LAKE RED

Spec. gravity (g/cm ³)	2,14
Spec. surface (m ² /g)	—
pH	9
Oil absorption (g/100g)	44
Light fastness (oil ink 20%)	3-4
Light fastness (liquid ink 8%)	4
Heat fastness (grey scale)	5
Sterilization (grey scale)	4-5
Additional products	4814C

4813C • Full Shade



4813C • Reduced Shade

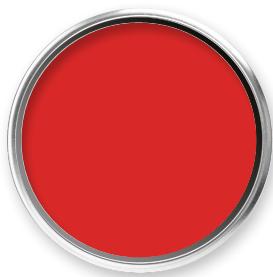


PR48:2

BONA, Ca LAKE RED

Spec. gravity (g/cm ³)	1,72
Spec. surface (m ² /g)	–
pH	7,20
Oil absorption (g/100g)	53
Light fastness (oil ink 20%)	5–6
Light fastness (liquid ink 8%)	4–5
Heat fastness (grey scale)	4
Sterilization (grey scale)	4

4822C • Full Shade



4822C • Reduced Shade

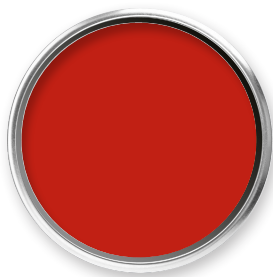


PR48:3

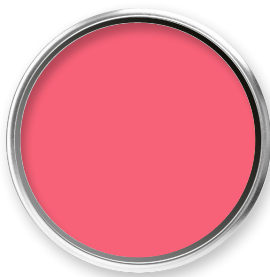
BONA, Sr LAKE RED

Spec. gravity (g/cm ³)	1,94
Spec. surface (m ² /g)	–
pH	8,50
Oil absorption (g/100g)	43,30
Light fastness (oil ink 20%)	4
Light fastness (liquid ink 8%)	4–5
Heat fastness (grey scale)	4
Sterilization (grey scale)	4

4834C • Full Shade



4834C • Reduced Shade

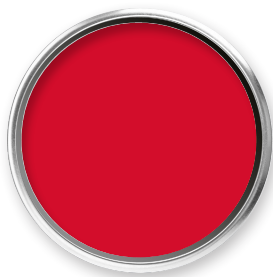


PR48:4

BONA, Mn LAKE RED

Spec. gravity (g/cm ³)	1,74
Spec. surface (m ² /g)	–
pH	7,20
Oil absorption (g/100g)	64
Light fastness (oil ink 20%)	6–7
Light fastness (liquid ink 8%)	6
Heat fastness (grey scale)	4–5
Sterilization (grey scale)	4–5

4846C • Full Shade



4846C • Reduced Shade

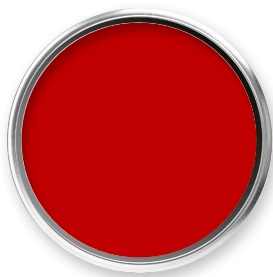


PR48:4

BONA, Mn LAKE RED

Spec. gravity (g/cm ³)	1,68
Spec. surface (m ² /g)	–
pH	8,20
Oil absorption (g/100g)	60
Light fastness (oil ink 20%)	6
Light fastness (liquid ink 8%)	6
Heat fastness (grey scale)	5
Sterilization (grey scale)	3–4

4847C • Full Shade



4847C • Reduced Shade

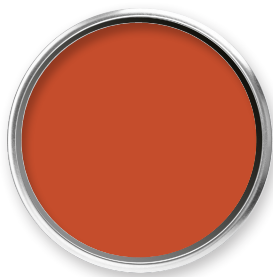


PR53:1

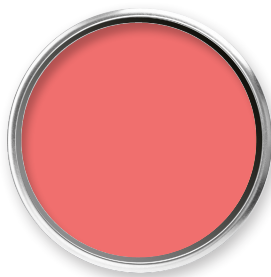
BETA-NAPHTHOL, Ba LAKE RED

Spec. gravity (g/cm ³)	1,85
Spec. surface (m ² /g)	–
pH	8,10
Oil absorption (g/100g)	46
Light fastness (oil ink 20%)	2
Light fastness (liquid ink 8%)	2–3
Heat fastness (grey scale)	3
Sterilization (grey scale)	5

5315C • Full Shade



5315C • Reduced Shade



PR81:5

TRIARYLCARBONIUM RED

Spec. gravity (g/cm ³)	1,71
Spec. surface (m ² /g)	–
pH	3,10
Oil absorption (g/100g)	67,50
Light fastness (oil ink 20%)	3–4
Light fastness (liquid ink 8%)	4
Heat fastness (grey scale)	4–5
Sterilization (grey scale)	1
Additional products	8136N

8135N • Full Shade



8135N • Reduced Shade

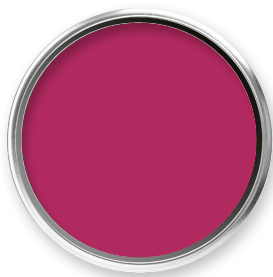


PR122

QUINACRIDONE RED

Spec. gravity (g/cm ³)	1,47
Spec. surface (m ² /g)	75
pH	8,30
Oil absorption (g/100g)	55
Light fastness (oil ink 20%)	6-7
Light fastness (liquid ink 8%)	6-7
Heat fastness (grey scale)	5
Sterilization (grey scale)	4-5
Additional products	2231C

2230C • Full Shade



2230C • Reduced Shade

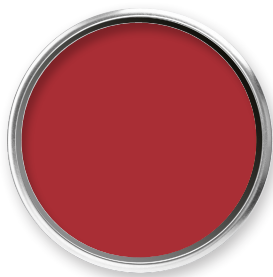


PR146

NAPHTHOL AS RED

Spec. gravity (g/cm ³)	1,36
Spec. surface (m ² /g)	—
pH	7,50
Oil absorption (g/100g)	38
Light fastness (oil ink 20%)	5-6
Light fastness (liquid ink 8%)	5-6
Heat fastness (grey scale)	5
Sterilization (grey scale)	3
Additional products	4637C

4635C • Full Shade



4635C • Reduced Shade

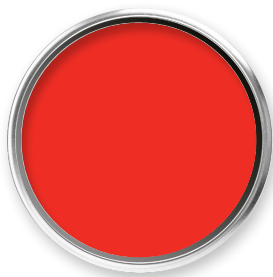


PR170

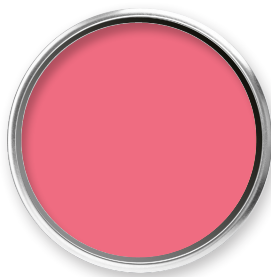
NAPHTHOL AS RED

Spec. gravity (g/cm ³)	1,20
Spec. surface (m ² /g)	22,50
pH	7,00
Oil absorption (g/100g)	50
Light fastness (oil ink 20%)	6-7
Light fastness (liquid ink 8%)	7
Heat fastness (grey scale)	5
Sterilization (grey scale)	5
Additional products	7030C · Lysopure 7038C

7032C · Full Shade



7032C · Reduced Shade

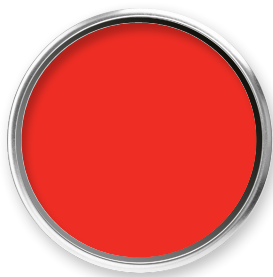


PR170

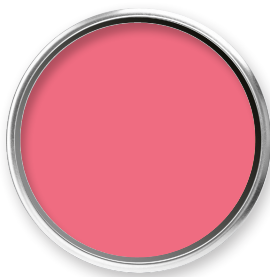
NAPHTHOL AS RED

Spec. gravity (g/cm ³)	1,32
Spec. surface (m ² /g)	30,40
pH	7,10
Oil absorption (g/100g)	56
Light fastness (oil ink 20%)	6
Light fastness (liquid ink 8%)	7
Heat fastness (grey scale)	5
Sterilization (grey scale)	3
Additional products	Lysopure 7039C

7034C • Full Shade



7034C • Reduced Shade

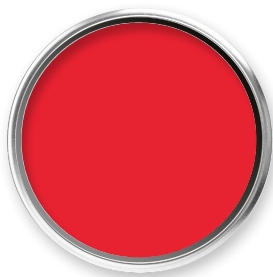


PR176

BENZIMIDAZOLONE RED

Spec. gravity (g/cm ³)	1,39
Spec. surface (m ² /g)	–
pH	6,80
Oil absorption (g/100g)	69
Light fastness (oil ink 20%)	6-7
Light fastness (liquid ink 8%)	6-7
Heat fastness (grey scale)	5
Sterilization (grey scale)	5

7635C • Full Shade



7635C • Reduced Shade

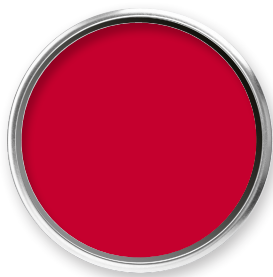


PR184

NAPHTHOL AS RED

Spec. gravity (g/cm ³)	1,36
Spec. surface (m ² /g)	35,3
pH	7,10
Oil absorption (g/100g)	58
Light fastness (oil ink 20%)	5-6
Light fastness (liquid ink 8%)	5
Heat fastness (grey scale)	4-5
Sterilization (grey scale)	3
Additional products	Lysopure 8438C · Lysopure 8439C

8435C · Full Shade



8435C · Reduced Shade

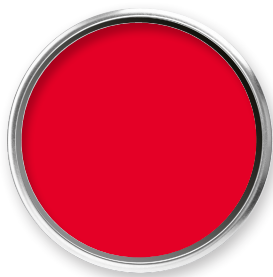


PR266

NAPHTHOL AS RED

Spec. gravity (g/cm ³)	1,37
Spec. surface (m ² /g)	–
pH	9,90
Oil absorption (g/100g)	58,6
Light fastness (oil ink 20%)	4–5
Light fastness (liquid ink 8%)	6–7
Heat fastness (grey scale)	5
Sterilization (grey scale)	5
Additional products	7036C

7035C • Full Shade



7035C • Reduced Shade

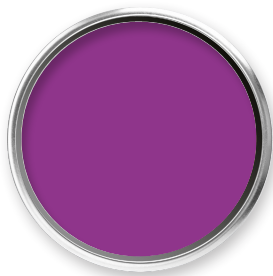


PV2

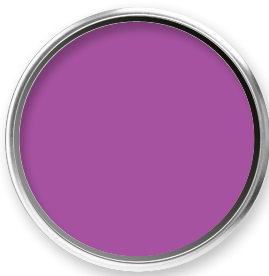
TRIARYLCARBONIUM VIOLET

Spec. gravity (g/cm ³)	1,95
Spec. surface (m ² /g)	44,20
pH	2,40
Oil absorption (g/100g)	52,250
Light fastness (oil ink 20%)	4
Light fastness (liquid ink 8%)	–
Heat fastness (grey scale)	4–5
Sterilization (grey scale)	4

0245N • Full Shade



0245N • Reduced Shade

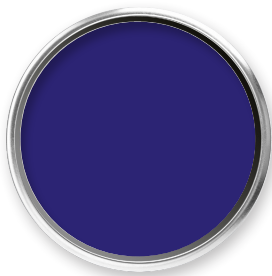


PV3

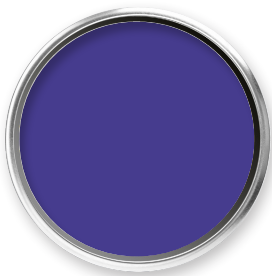
TRIARYLCARBONIUM VIOLET

Spec. gravity (g/cm ³)	1,84
Spec. surface (m ² /g)	37
pH	4,10
Oil absorption (g/100g)	41
Light fastness (oil ink 20%)	5
Light fastness (liquid ink 8%)	4-5
Heat fastness (grey scale)	4
Sterilization (grey scale)	4

0345N • Full Shade



0345N • Reduced Shade

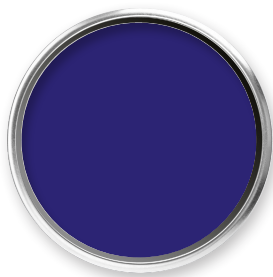


PV3:4

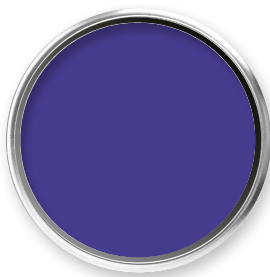
TRIARYLCARBONIUM VIOLET

Spec. gravity (g/cm ³)	1,83
Spec. surface (m ² /g)	47,40
pH	5,10
Oil absorption (g/100g)	48
Light fastness (oil ink 20%)	4
Light fastness (liquid ink 8%)	3-4
Heat fastness (grey scale)	4
Sterilization (grey scale)	4
Additional products	0347N

0348N • Full Shade



0348N • Reduced Shade



PV19

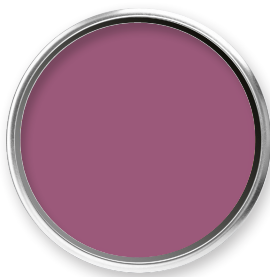
QUINACRIDONE VIOLET

Spec. gravity (g/cm ³)	1,56
Spec. surface (m ² /g)	81
pH	8,80
Oil absorption (g/100g)	64
Light fastness (oil ink 20%)	7
Light fastness (liquid ink 8%)	–
Heat fastness (grey scale)	5
Sterilization (grey scale)	4–5

1940C • Full Shade



1940C • Reduced Shade

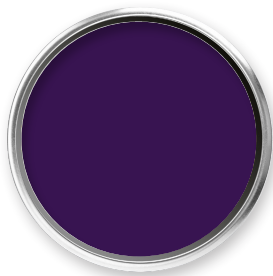


PV23

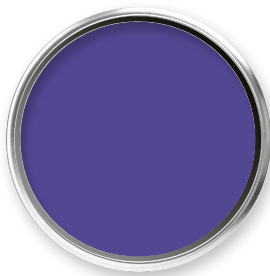
DIOXAZIN VIOLET

Spec. gravity (g/cm ³)	1,60
Spec. surface (m ² /g)	–
pH	8,90
Oil absorption (g/100g)	63
Light fastness (oil ink 20%)	6-7
Light fastness (liquid ink 8%)	6-7
Heat fastness (grey scale)	4-5
Sterilization (grey scale)	4

2341C • Full Shade



2341C • Reduced Shade



PV23

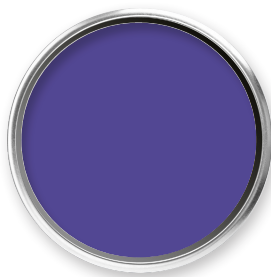
DIOXAZINE VIOLET

Spec. gravity (g/cm ³)	1,57
Spec. surface (m ² /g)	–
pH	7,90
Oil absorption (g/100g)	48
Light fastness (oil ink 20%)	6–7
Light fastness (liquid ink 8%)	6–7
Heat fastness (grey scale)	5
Sterilization (grey scale)	3

2342C • Full Shade



2342C • Reduced Shade

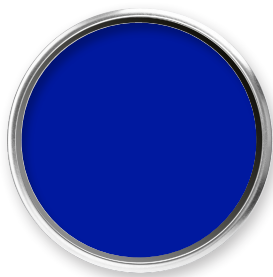


PB1

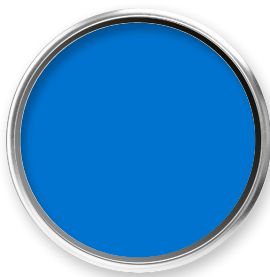
TRIARYLCARBONIUM BLUE

Spec. gravity (g/cm ³)	1,71
Spec. surface (m ² /g)	50,20
pH	7,20
Oil absorption (g/100g)	46
Light fastness (oil ink 20%)	5
Light fastness (liquid ink 8%)	—
Heat fastness (grey scale)	3
Sterilization (grey scale)	3
Additional products	0154N

0151N • Full Shade



0151N • Reduced Shade

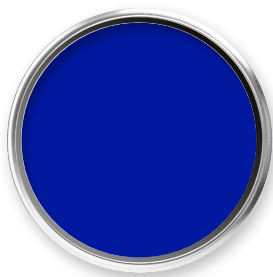


PB1

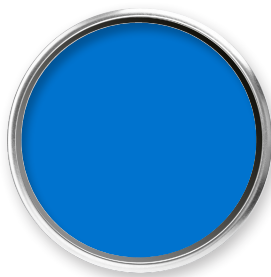
TRIARYLCARBONIUM BLUE

Spec. gravity (g/cm ³)	1,71
Spec. surface (m ² /g)	49,4
pH	6,40
Oil absorption (g/100g)	51
Light fastness (oil ink 20%)	5
Light fastness (liquid ink 8%)	3
Heat fastness (grey scale)	3-4
Sterilization (grey scale)	3
Additional products	0153N

0155N • Full Shade



0155N • Reduced Shade

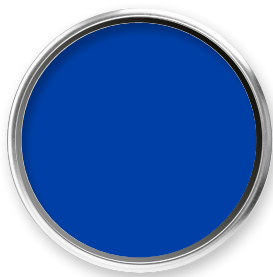


PB15:1

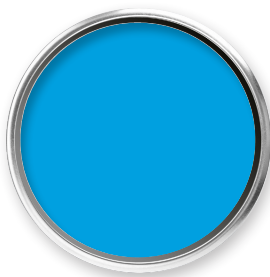
PHTHALOCYANINE BLUE

Spec. gravity (g/cm ³)	1,64
Spec. surface (m ² /g)	51
pH	9
Oil absorption (g/100g)	52
Light fastness (oil ink 20%)	5-6
Light fastness (liquid ink 8%)	7-8
Heat fastness (grey scale)	5
Sterilization (grey scale)	4

1511C • Full Shade



1511C • Reduced Shade

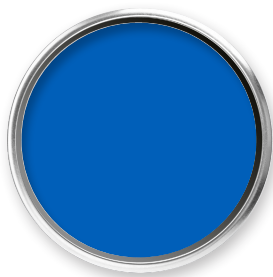


PB15:3

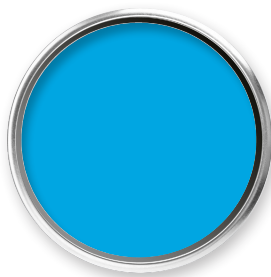
PHTHALOCYANINE BLUE

Spec. gravity (g/cm ³)	1,63
Spec. surface (m ² /g)	–
pH	7
Oil absorption (g/100g)	38
Light fastness (oil ink 20%)	6–7
Light fastness (liquid ink 8%)	7–8
Heat fastness (grey scale)	5
Sterilization (grey scale)	2
Additional products	1533C

1532C • Full Shade



1532C • Reduced Shade

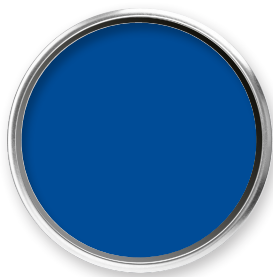


PB15:4

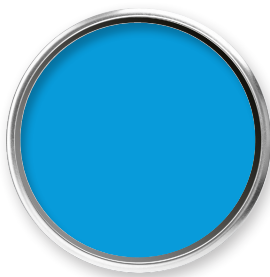
PHTHALOCYANINE BLUE

Spec. gravity (g/cm ³)	1,57
Spec. surface (m ² /g)	28,7
pH	4
Oil absorption (g/100g)	38
Light fastness (oil ink 20%)	5-6
Light fastness (liquid ink 8%)	7-8
Heat fastness (grey scale)	5
Sterilization (grey scale)	2

1541C • Full Shade



1541C • Reduced Shade



PG7

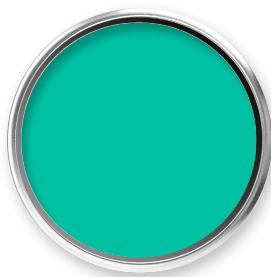
PHTHALOCYANINE GREEN

Spec. gravity (g/cm ³)	2,07
Spec. surface (m ² /g)	46,50
pH	9
Oil absorption (g/100g)	44
Light fastness (oil ink 20%)	5-6
Light fastness (liquid ink 8%)	8
Heat fastness (grey scale)	5
Sterilization (grey scale)	4

0762C • Full Shade



0762C • Reduced Shade



*** The color of the digital shades may show a slight deviation from the original**

The information and recommendations contained herein are based on data we believe to be reliable and does not imply any warranty or performance guarantee, as conditions and methods of use of our products are beyond our control. The data herein is determined using Vibrantz's standard test methods. Hazard and safety information with respect to this product is available in the applicable SDS. Vibrantz will not be liable under any circumstance for consequential or incidental damages, including but not limited to, lost profits resulting from the use of our products.

Copyright © 2023 Vibrantz Technologies

www.vibrantz.com